



The Development of Benoa Port as Bali Maritime Tourism Hub (BMTH)

Velly Asvaliantina¹, Prasetyo², A. Sodikin², A. Fathoni², R. Hidayat¹
¹ Coordinating Ministry for Maritime Affairs & Investment, Indonesia;
velly.asv@maritim.go.id
² PT.Pelabuhan Indonesia (Pelindo), Indonesia



Introduction

- **Bali's Attraction:** "Island of the Gods," Bali is a top destination for global tourism



- **Significance of Benoa Port:** Benoa Port is the main gateway for cruise ships in Bali/Indonesia, crucial for boosting maritime tourism in the region.

Indonesia: Top Ports 2018

Port	Transit	Turnaround	Overnight	Total
Benoa/ Bali	35	25	22	82
Gili Islands	35	0	8	43
Komodo/ Slawi Bay	40	0	0	40
Semerang/ Borobudur	22	0	1	23
Surabaya	20	0	0	20

Southeast Asia

Indonesia: Top Ports 2019

Port	Transit	Turnaround	Overnight	Total
Benoa/ Bali	28	26	16	70
Bintan	51	0	0	51
Komodo/ Slawi Bay	40	0	4	44
Lembar/ Lombok	44	0	0	44

Cruise ship Calls to Benoa is #1 among Indonesia's Top Ports in 2018-2019 (Source: CLIA, 2018, 2019).

Project Overview

- **BMTH Objective:**

Transform Benoa Port into a leading maritime tourism hub to accommodate larger cruise ships and generate economic benefits for Bali. **BMTH is an ecosystem that integrates the tourism, port and entertainment sectors to create a multiplier effect for regional and national economic growth**

- **Strategic Importance** (Listed as a National Strategic Project by Indonesia's Presidential Regulation Number 109 of 2020):

- Strategic position to support Butterfly Route and become a Hub Cruise Terminals in Asia
- Making it an Energy Hub for the Bali and Eastern Indonesia region and supporting environmentally friendly energy
- Port **operational services** for cruise ships, yachts and loading and unloading vessels



Opportunities

- **Economic Benefits:** Potential to boost Bali's tourism revenue significantly by increasing cruise ship arrivals and enhancing tourist experiences.
- **Strategic Positioning:** BMTH aims to position Bali as a leading maritime tourism hub in the Asia-Pacific region.
- **Sustainability Focus:** Emphasis on working with nature and maintaining Bali's environmental integrity throughout development.

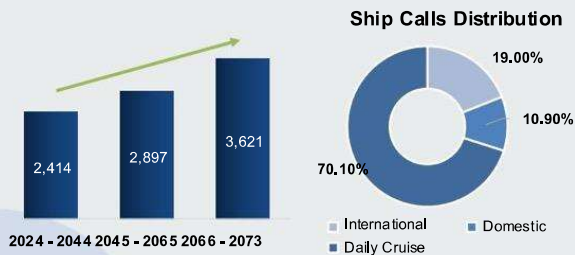
Relevant UN SDGs:



The Value of BMTH to Regional and National Economics



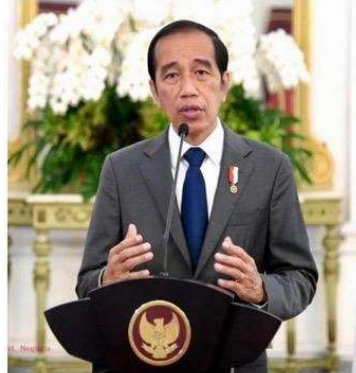
Cruise Arrival Projections



Passenger Arrival Projections



For the Government



BMTH development is a stimulus for economic development Bali with a projected **2.7 x multiplier effect on PRDB**



Stimulate the increase in **the number of foreign tourists 1.5 times** and **local tourists 2 times**



Provides **an impact on increasing tax revenues** for both City/Regency Government, Provincial Government and Central government

For Society



Job creation for **1,925 workers** during the construction phase



Encouraging **the growth of MSMEs** as a driving engine the economy of the people of Bali and its surroundings



Placing Bali Island/Benoa Harbor as **a gateway for foreign tourists** who want to explore various destinations in Indonesia

PROJECT'S DETAILS, CHALLENGES & DEVELOPMENT PROGRESSES

Area and Project Descriptions

- **Location:** Benoa Port is strategically located near Bali's major tourist attractions.
- **Facilities:**
 - Upgraded to serve larger cruise ships with extended berths and deeper channels.
 - Designed as a multipurpose port with distinct areas for tourism, LNG, and fishing activities.
 - Features like yacht berths, a fish market, and recreational facilities.



Key Development Features

- **Cruise Terminal:** Enhanced facilities to berth two 350-meter cruise ships simultaneously.
- **Yacht Facilities:** Wet and dry berths, yacht clubs, and leisure amenities to attract high-end tourism.
- **LNG Facilities**

Bali Tenten and Taman Dhanu Kerthi : 16,7 Ha

An integrated facility catering to tourism and society offering international standard university, retail outlets, restaurant, and a convention hall

Development Area I : – 23, 7 Ha

Development Area I features a Yacht District, Entertainment Area, Segara Kerthi Park, and Lifestyle

Total water area : 26,4 Ha

Total water area 25,3 Ha

Development Area II

Development Area II includes an LNG and Liquid Bulk Area for the Energy Hub, Container Zone, Logistics Area, and Wana Kerthi Park.

Tourism Commercial Area: 73 Ha

This includes facilities, such as the Hop on Hop Off Terminal, Hotel, Restaurant, F&B area

MASTERPLAN OF BALI MARITIME TOURISM HUB (BMTH)

Technical Challenges

➤ Dredging and Construction:

- Dredging of access channels and port basins up to 12 meters.
- Removal of 74 unregistered and wrecked fishing vessels.



Environmental Challenges

➤ Environmental Considerations:

- Environmental Impact Assessment (EIA) challenges.
- Reclamation activities initially faced local opposition due to concerns about the disruption of sacred areas and natural beauty.




forball.org/id/perdana-aksi-forball-langsung-segel-kantor-dprd-dan-gubernur-bali/

BERANDA TENTANG FORBALI PERSOALAN ARTIKEL DUKUNG FORBALI FAQ


0 Maret 23rd, 2019 // ForBALI

Perdana! Aksi ForBALI langsung segel kantor DPRD dan Gubernur Bali


pencarian



0 Juni 14th, 2019
Jokowi Datang, Baliho BTR Dilepas Paksa



0 Mei 26th, 2019
Main Aman, Ketua DPRD Bali Seperti Sangut



0 Mei 24th, 2019

Sabtu 23 Maret 2018 ForBALI (Forum Rakyat Bali Tolak Reklamasi Teluk Benoa) bersama Pasubayan Tolak Reklamasi kembali menggelar aksi Parade Budaya. Aksi yang dimulai Pukul 15.00 ini dimulai dengan longmarch dari parkir timur renon lalu kemudian dilanjutkan dengan mengitari jalan raya Puputan dan menuju kantor DPRD Bali. Di depan kantor DPRD Bali massa membentangkan spanduk besar dengan panjang 10 meter x 3 meter yang bertuliskan "Bali Tolak

Community and Regulatory Challenges

- **Community Opposition:** Initial backlash from local communities and authorities due to environmental impacts.
- **Government Coordination:** Strategic decisions made through coordination by the Coordinating Ministry for Maritime Affairs and Investments (CMMAI) to resolve issues such as ship removal and project's permit acceleration.

BMTH DEVELOPMENT PROGRESS

Area Development I

- 1. Marina District ±4,6 ha
- 2. Entertainment District ±3,78 ha
- 3. Retail/Lifestyle District ± 3,21 ha
- 4. Park - Taman Segara Kerthi ±8,11 ha

Rencana Investasi Rp 6,06 T
(Termasuk PMN Rp 1,2T)

Realisasi Investasi Rp 3,16 T
*Termasuk PMN Rp 1,135T



Area Development II

- 1. Liquid Bulk Zone & LNG ±17 ha
- 2. Zona Petikemas ±5 ha
- 3. Logistic Centre ±5 ha
- 4. Taman wana Kerthi ±18 ha

Progress Status

[Green Box] Completed [Blue Box] In Progress [Grey Box] Initiation



ROADS CONSTRUCTIONS



CONSTRUCTION OF BALINES STATUES (DEWA RUCI & MATSYA AWATARA)



CSP & SLAB CONSTRUCTION

**Paket 4. (Finished 100%)
Revetment AND Retaining Wall Dumping I**



Pek Retaining Wall



Pek Rrevetment



Pek Cut and Fill



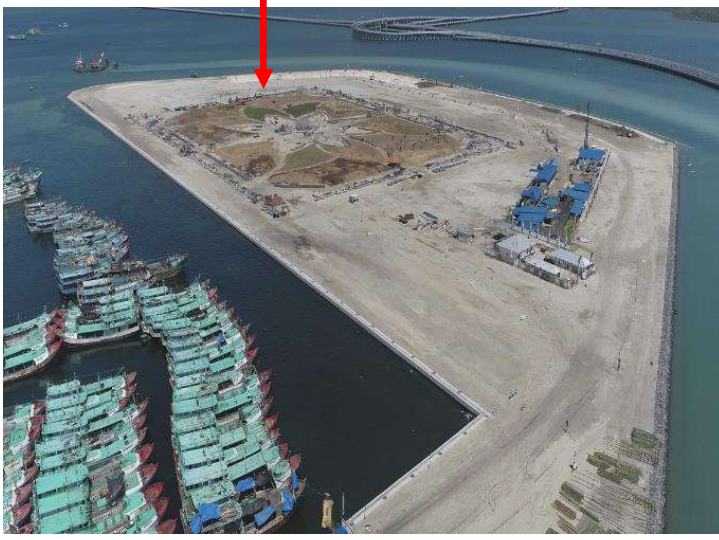
Pek Ducting



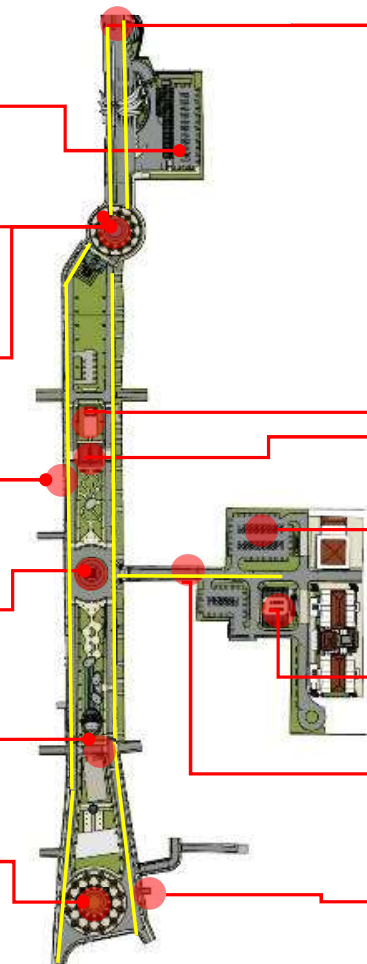
Pek Kansten



Pek Grating



Paket 3. (Finished 100%)





Conclusion

- **Summary:** The BMTH project presents both significant challenges and opportunities, requiring a collaborative approach for successful implementation.
- **Key Success Factors:** Strategic government coordination, community engagement, and adherence to environmental standards.

THANK YOU